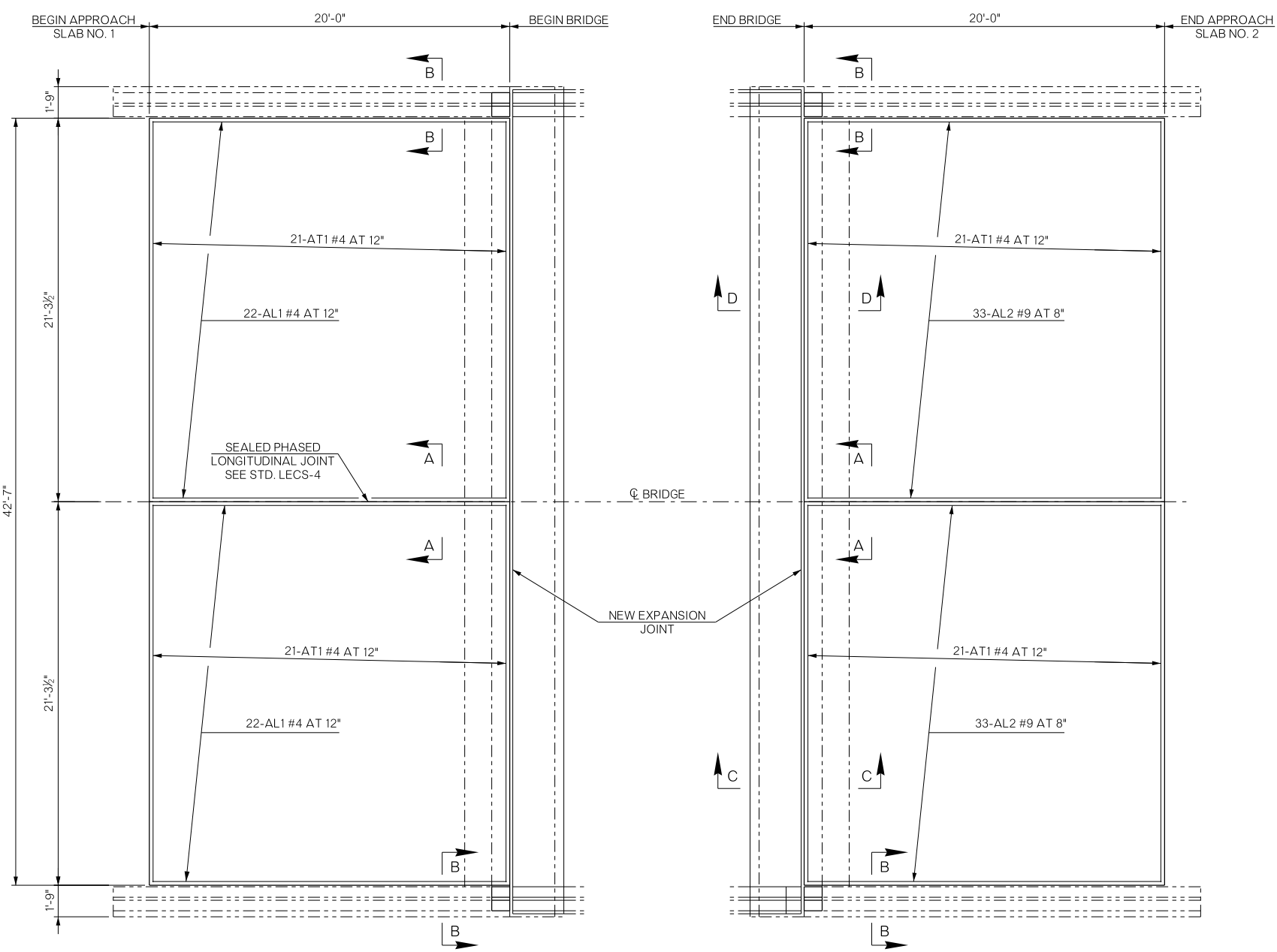
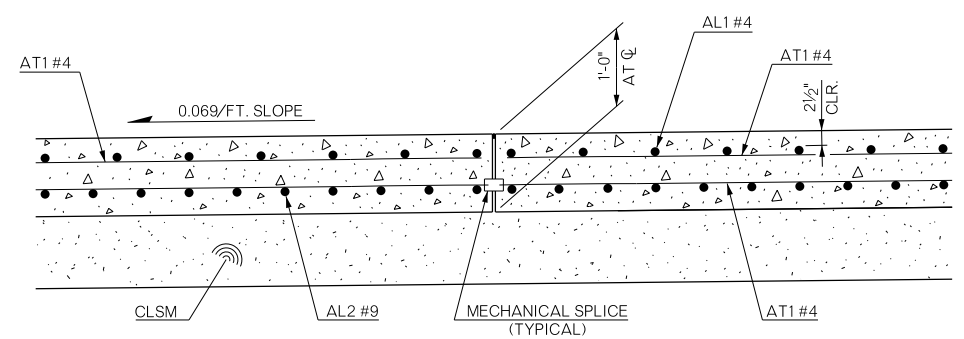


REVISIONS		
REV. NO.	DESCRIPTION	DATE

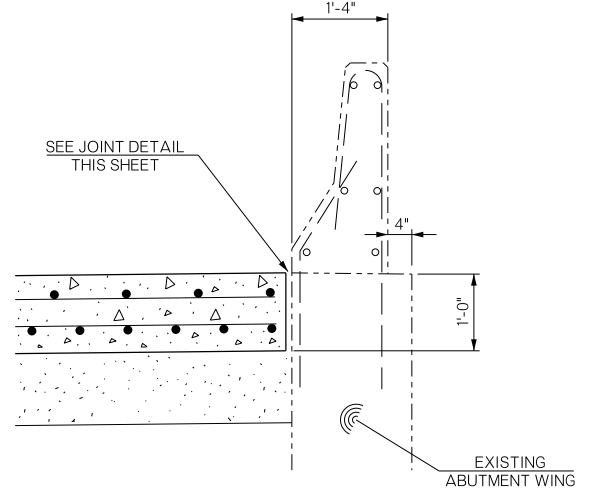


APPROACH SLAB NO. 1
TOP REINFORCING MAT DETAIL

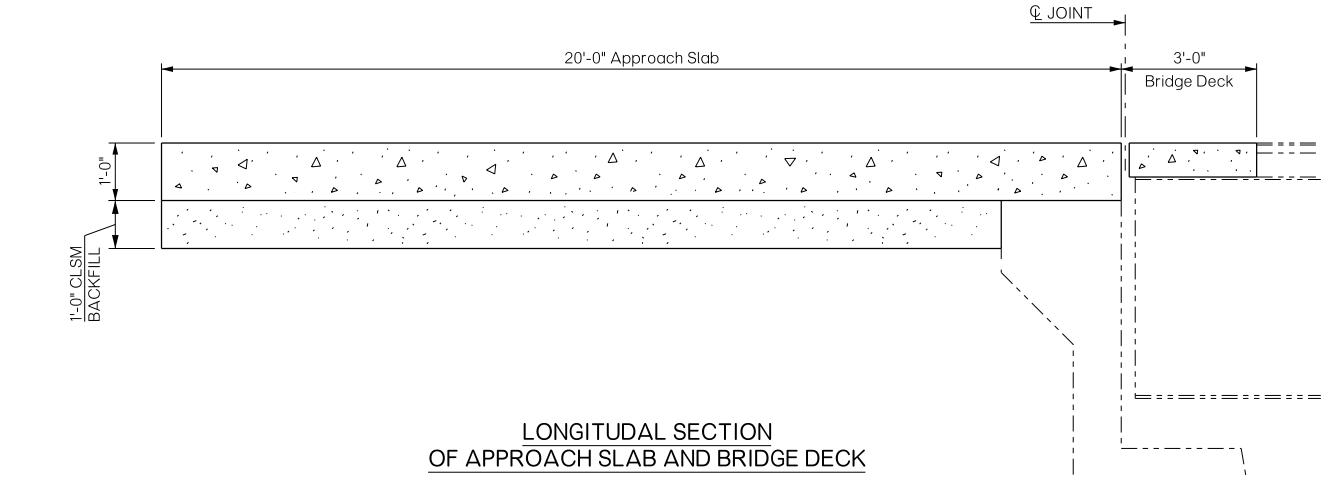
APPROACH SLAB NO. 2
BOTTOM REINFORCING MAT DETAIL



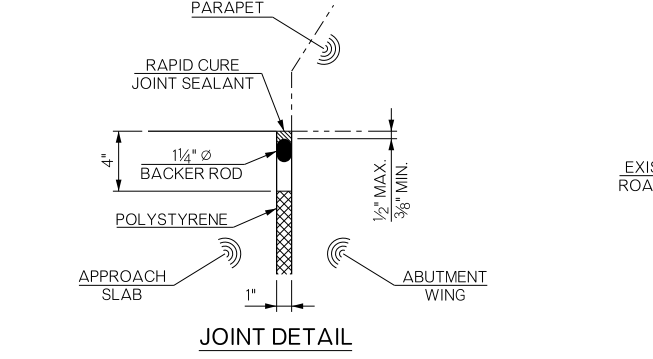
SECTION A-A



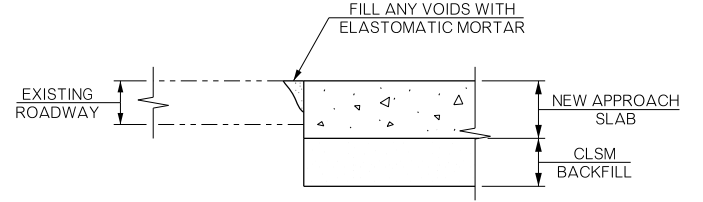
SECTION B-B



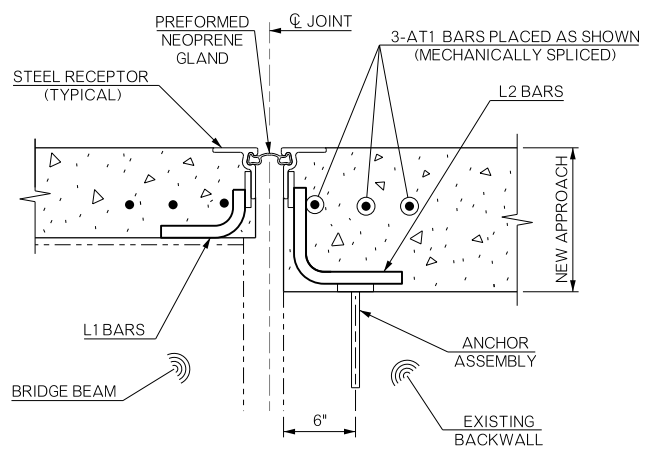
LONGITUDINAL SECTION
OF APPROACH SLAB AND BRIDGE DECK



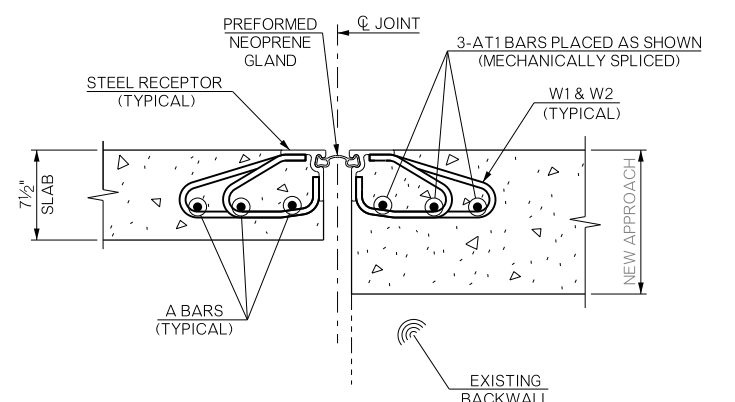
JOINT DETAIL



SECTION AT NEW APPROACH SLAB
AND EXISTING ROADWAY



SECTION C-C
(ABOVE BEAMS)



SECTION D-D
(IN BETWEEN BEAMS)

APPROACH SLAB BAR LIST, EPOXY COATED (ONE SHOWN, TWO REQUIRED)				
MARK	SIZE	NO.	FORM	LENGTH
AT1	#4	90	STR.	21'-0"
AL1	#4	44	STR.	19'-8"
AL2	#9	66	STR.	19'-8"

APPROACH SLAB QUANTITIES			
ITEM	UNIT	APPROACH SLAB NO. 1	APPROACH SLAB NO. 2
APPROACH SLAB	S.Y.	94.70	94.70
CLSM BACKFILL	C.Y.	27.70	27.70

- NOTES:
- USE GRADE 60 EPOXY COATED REINFORCING (APPROXIMATELY 6,260 LBS. OF EPOXY COATED REINFORCING IN EACH APPROACH SLAB).
 - USE CLASS AA CONCRETE (APPROXIMATELY 31.60 CU. YDS. OF CLASS AA CONCRETE IN EACH APPROACH SLAB).
 - ALL CLEARANCES ARE 2" UNLESS SPECIFIED OTHERWISE.
 - THE NEW APPROACH SLAB WILL BE CONSTRUCTED IN TWO PHASES. "AT1" BARS IN BOTTOM MAT AND THRU EXPANSION DEVICE'S W1 AND W2 ANCHOR BARS WILL BE CONNECTED USING MECHANICAL SPLICES. COST OF MECHANICAL SPLICES WILL BE INCLUDED IN OTHER ITEMS OF WORK.
 - THE NEW APPROACH SLAB WILL BE CONSTRUCTED IN CONJUNCTION WITH "REPAIR BRIDGE ITEM (TYPE A) EXPANSION JOINT REPLACEMENT AT ABUTMENTS" ON SHEETS B003 AND B004.
 - ALL COSTS ASSOCIATED WITH SAW CUTTING AND EXCAVATION OF EXISTING ROADWAY SURFACE, REMOVAL OF EXISTING CONCRETE, NEW EPOXY COATED REINFORCING, NEW CLASS AA CONCRETE, SEALING OF LONGITUDINAL JOINT, FORMING, AND OTHER INCIDENTALS WILL BE INCLUDED IN SQUARE YARDS OF "APPROACH SLAB" PAY ITEM.
 - EXCAVATION INCLUDES REMOVAL OF ANY CONCRETE PATCHING IN PLACE.
 - CLSM WILL BE PAID FOR SEPARATELY UNDER CLSM PAY ITEM.

BRIDGE "A" US-81 OVER UP RAILROAD	GRADY COUNTY	Design	MLC	04/16
DETAILS OF APPROACH SLABS		Detail	GLB	04/16
		Check	DAH	04/16
STATE OF OKLAHOMA		Squad	HARJO	
DEPARTMENT OF TRANSPORTATION		Engr.	MOLLA-ESMAIL	
JOB/PIECE NO.	31701(04)	SHEET NO.	B005	